

FASTAID FOCUS™ EMERGENCY EYE WASH STATION



Description

- Dual-purpose wall mountable and portable plastic case
- Large internal treatment mirror
- TGA registered no. 128314
- Includes essential eye injury treatments
- Ideal for manufacturing and construction workplaces

The FastAid Focus™ Emergency Eyewash Station is a high-visibility, wall-mounted emergency eye care station designed to provide rapid and effective treatment for eye injuries. Also includes a handy eye injuries treatment card.

Equipped with two 500ml bottles of sterile saline solution featuring ergonomic eye showers, two sterile eye pads, conforming bandage, first aid tape and a shatterproof internal mirror, this station ensures quick and precise response during critical moments.

The translucent cover enhances visibility, allowing users to quickly confirm the availability of contents, while the quick-detach wall mount ensures easy portability in emergencies.

Ideal for industrial workplaces, manufacturing and construction environments, the FastAid Focus™ Emergency Eyewash Station is engineered to protect contents in dusty areas.

Includes wall mount screws and wall plugs.

Dimensions: 18 (W) x 27 (H) x 8 (D) cm



Compliance

Green denotes compliance

Application	Personal	Vehicle	Workplace	Home	Recreation
Number of persons	Family	1 person	1-10	1-25	1-50
Risk level	Low risk	High risk			
Other risks	Burn injuries	Eye injuries	Outdoor work	Food area	Remote area
Industry	Aged care	Agriculture	Civil	Construction	DIY
	Education	Food	Healthcare	Home	Manufacturing
	Marine	Office	Recreation	Remote	Retail
	Trades	Transport	Vehicle	Workplace	

Scan to view product page and downloads



FASTAID FOCUS™ EMERGENCY EYE WASH STATION



Contents

Conforming Bandage, 5cm	1
Eye Pads, Non-Adherent	2
Eye Wash, 500ml Bottle with Eye Shower	2
Paper Tape, Hypoallergenic, 1.25cm	1
Eye Injuries Treatment Card	1

Specifications

GENERAL	
Code	FADE20
Weblink	https://fastaid.com.au/products/fade20
Colour	Blue
Minimum Order Quantity	
Warranty	12 months
Attracts GST	Yes
Batch Tracked	Yes
Expiry Tracked	Yes
Serial Tracked	No
COMPLIANCE	
TGA Registered No.	1238314
ISO9001 Certified	Yes
WHS Workplace Compliant	No
Main Material Product	
Timber or Pulp	No
Type of Wood	
Dangerous Goods	No
HS (Tariff) Code	
UNSPSC Code	
Country of Origin	
EACH (EA)	
Product Dimensions	18 (W) x 27 (H) x 8 (D) cm
Dimensions (w/ Packaging)	18 (W) x 27 (H) x 8 (D) cm
Cubic	0.003888 m ³
Product Weight	
Weight (w/ Packaging)	
Packaging Weight	
Packaging Material	
Recycled Packaging Content %	
Barcode	9345392004665

INNER (INR)	
Dimensions	
Cubic	
Weight (w/ Packaging)	
Packaging Weight	
Packaging Material	
Recycled Packaging Content %	
Barcode	
CARTON (CTN)	
Dimensions	58 (W) x 19.7 (H) x 39.5 (D) cm
Cubic	0.0451327 m ³
Weight (w/ Packaging)	14.4 kg
Packaging Weight	
Packaging Material	
Recycled Packaging Content %	
Barcode	29345392004669
PALLET (PLT)	
Qty per Pallet	192
Cartons per Layer	
Layers per Pallet	
Weight (w/ Packaging & Pallet)	

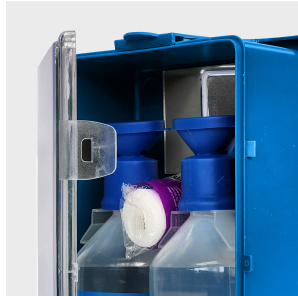
FASTAID FOCUS™ EMERGENCY EYE WASH STATION



Features



Dual-purpose wall mountable and portable plastic case



Premium quality guaranteed and ARTG registered hospital grade contents



Dual-purpose wall mountable and portable plastic case



Internal mirror to assist with treatment of eye injuries

Lifestyle Applications

